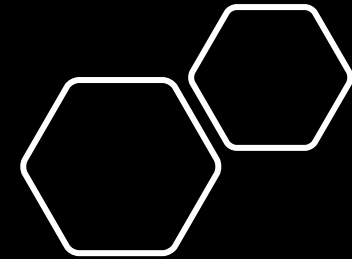
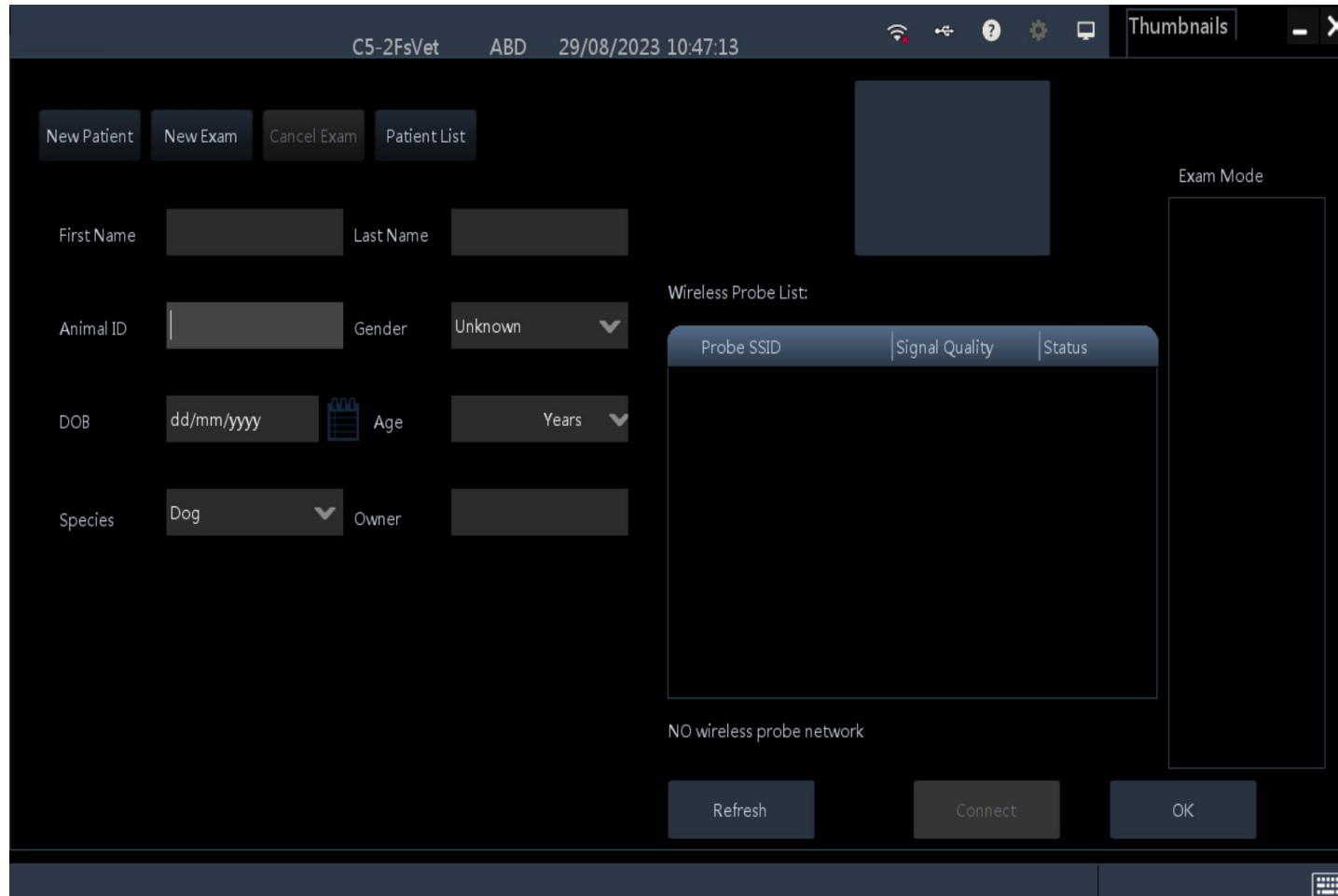


**How to add a new Vetel preset**

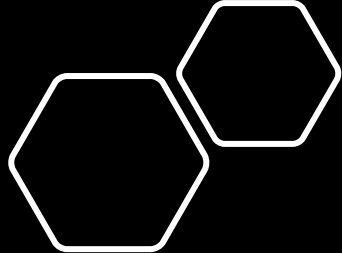
- Open the SonoIQ software and then the first page will be the following one:



Then the steps are 3:

The screenshot shows a veterinary software interface with three distinct sections, each marked with a blue box containing a number:

- 1 PATIENT:** This section contains a form for patient information. At the top are buttons for "New Patient", "New Exam", "Cancel Exam", and "Patient List". Below these are input fields for "First Name", "Last Name", "Animal ID", "Gender" (with a dropdown menu set to "Unknown"), "DOB" (with a date format "dd/mm/yyyy" and a calendar icon), "Age" (with a dropdown menu set to "Years"), "Species" (with a dropdown menu set to "Dog"), and "Owner".
- 2 PROBE:** This section displays a "Wireless Probe List" table with columns for "Probe SSID", "Signal Quality", and "Status". Below the table, it shows the message "NO wireless probe network" and buttons for "Refresh", "Connect", and "OK".
- 3 PRESETS:** This section is labeled "Exam Mode" and contains a large empty area for displaying exam results or images.




# STEP 1: PATIENT

C5-2FsVet ABD 29/08/202

New Patient New Exam Cancel Exam Patient List

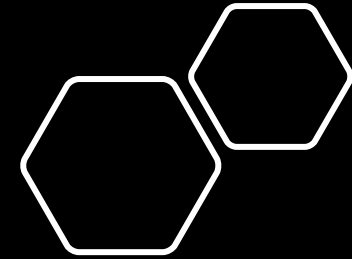
First Name  Last Name

Animal ID  Gender Unknown

DOB   Age

Species Dog  Owner

Please add the  
information required

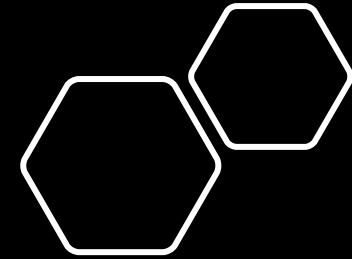


## STEP 2: PROBE

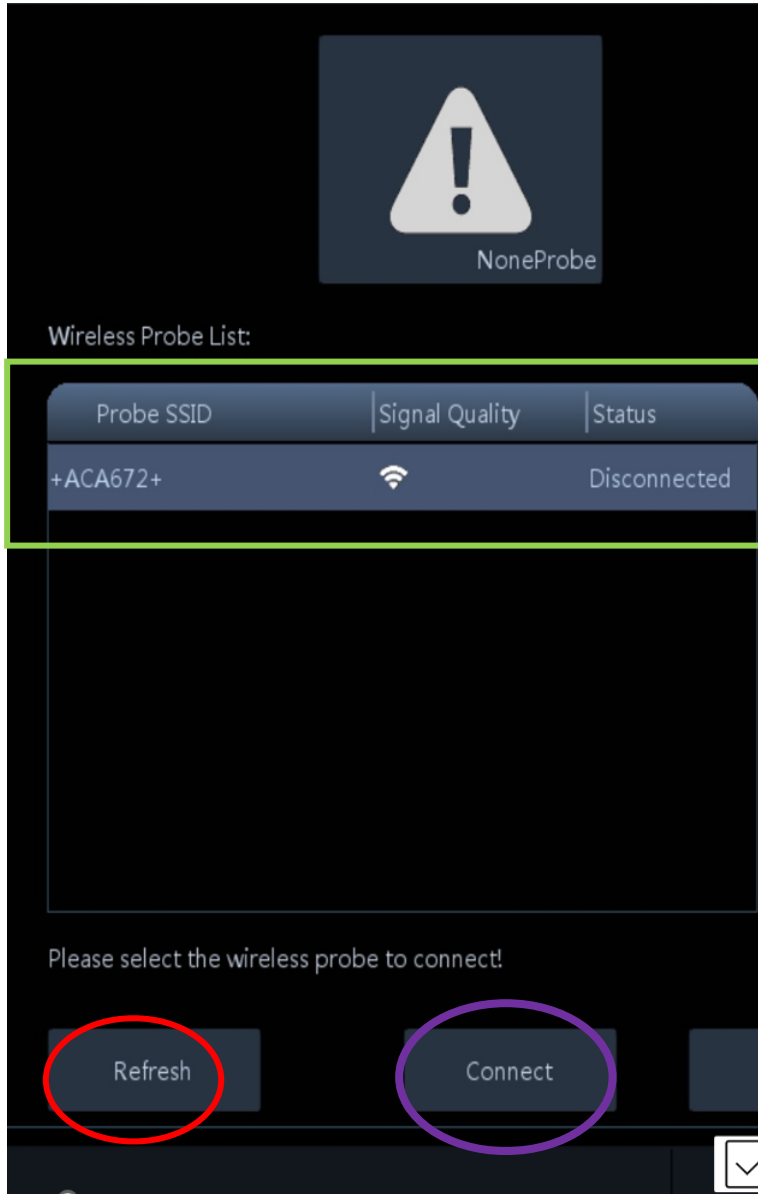


Click on the  
power button

What you should see is that the power button is blinking and the main menu button is steady( both of the lights are blue)



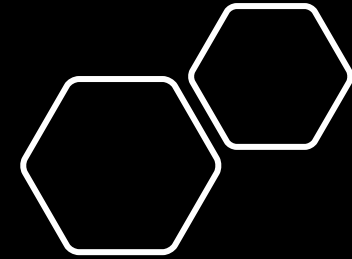
# STEP 2: PROBE



1) Click on **Refresh** button

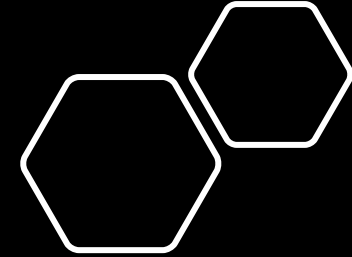
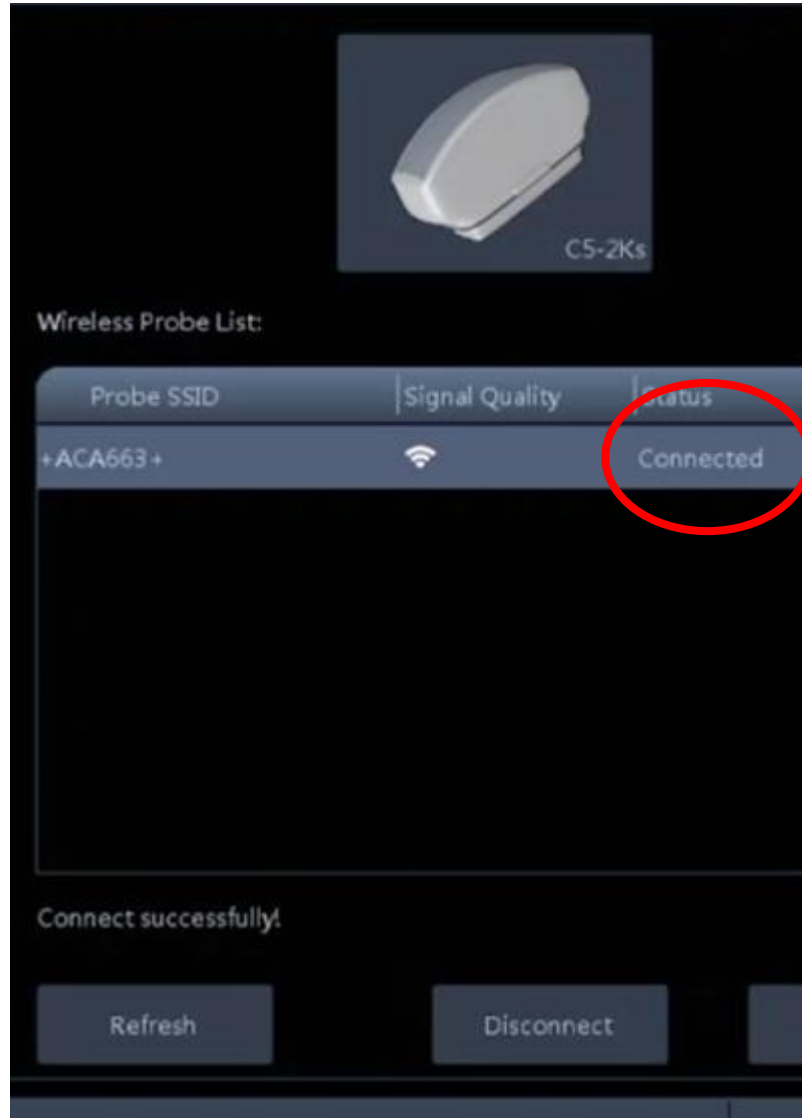
2) What you should see is this banner with the probe information. Click on it and you should see it with this blue halo around.

3) Click on **Connect** button



# STEP 2: PROBE

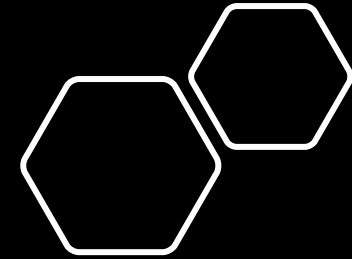
Now you should see the probe **connected**



# STEP 3: PRESETS



You can directly click on **OK** button and use the default preset(**ABD**) or choose an another one and at the end always click the **OK** button.





C5-2FsVet ABD 29/08/2023 11:47:37

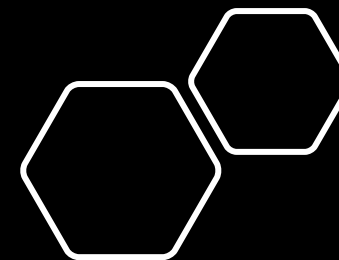
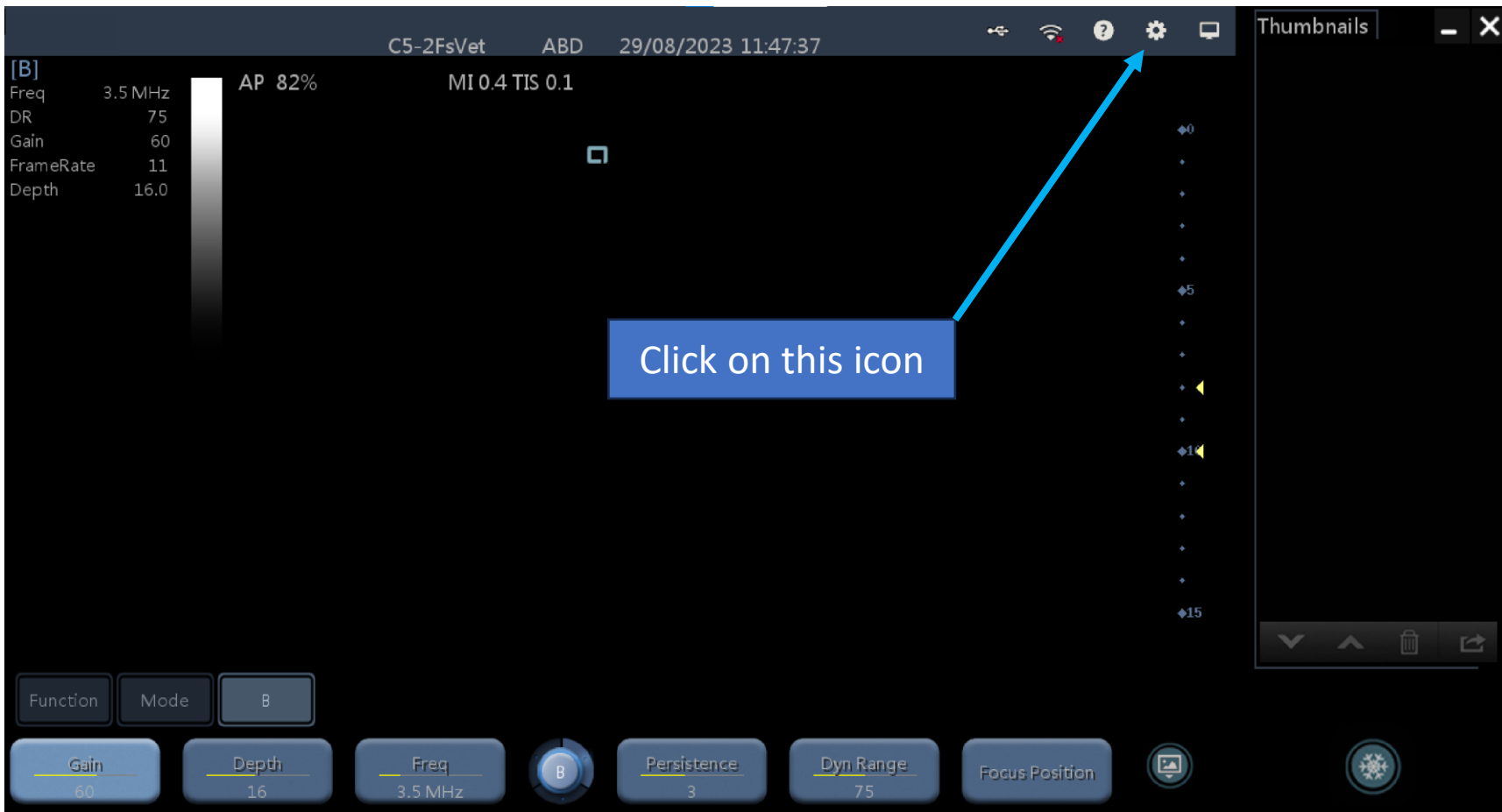
[B]  
Freq 3.5 MHz AP 82% MI 0.4 TIS 0.1  
DR 75  
Gain 60  
FrameRate 11  
Depth 16.0

Click on this icon

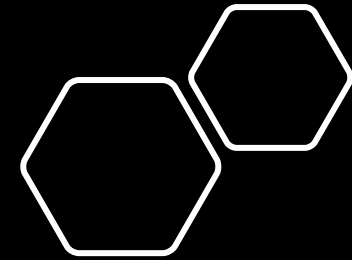
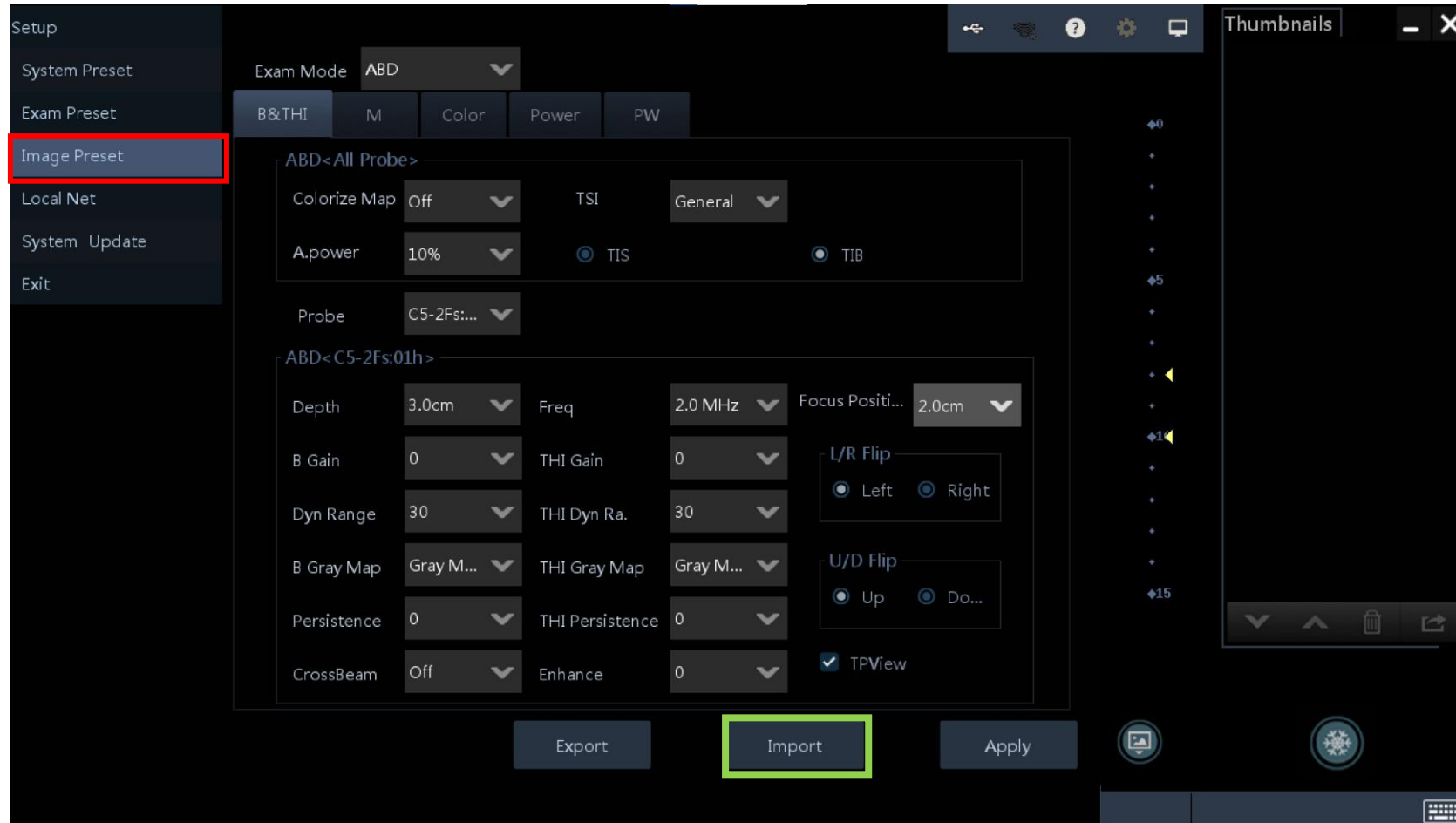
Function Mode B

Gain 60 Depth 16 Freq 3.5 MHz Persistence 3 Dyn Range 75 Focus Position

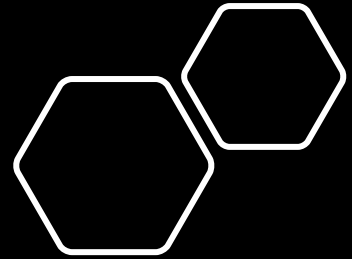
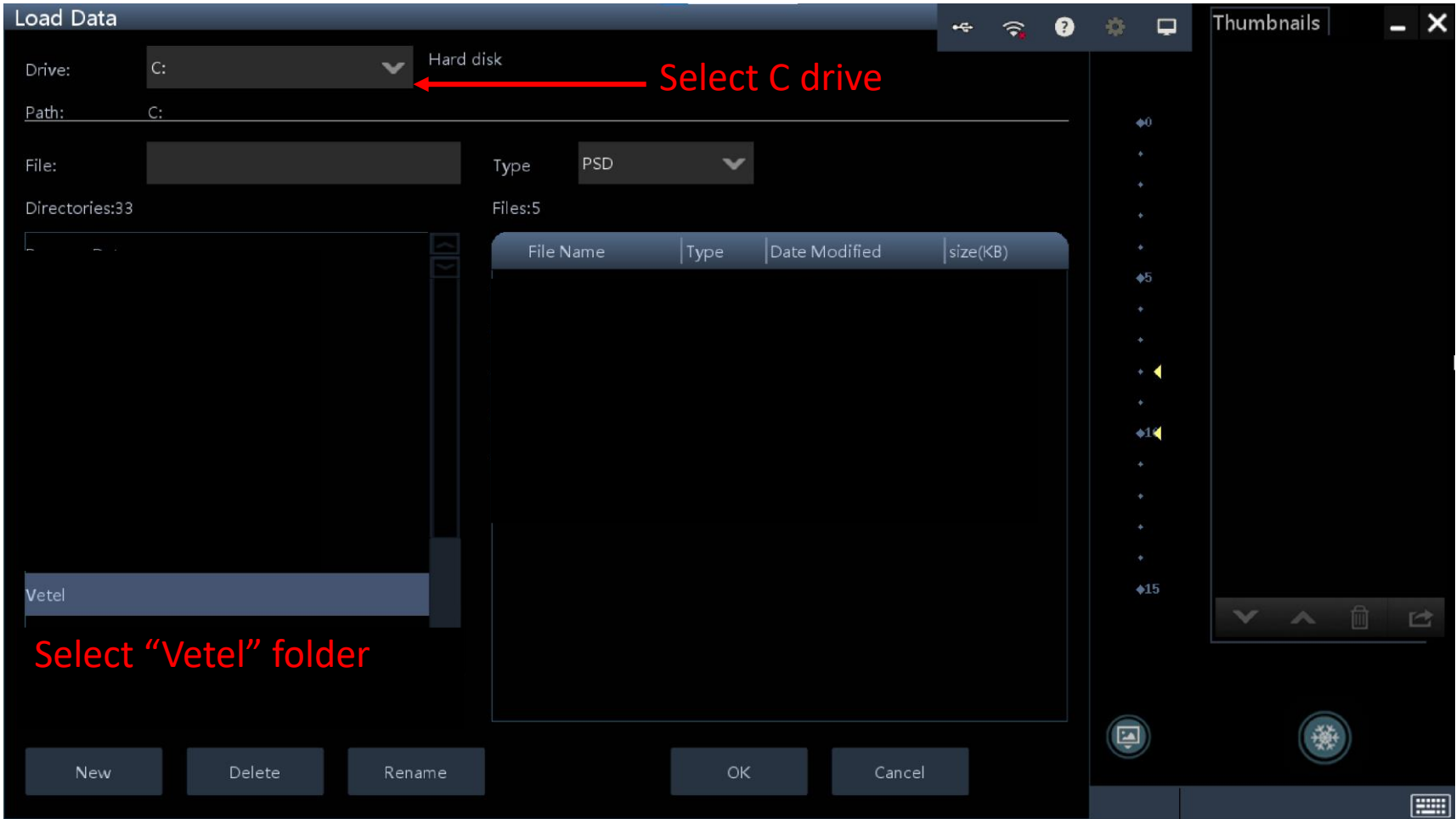
Thumbnail panel: Thumbnails

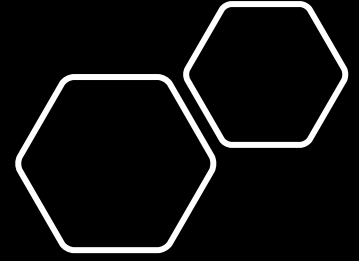
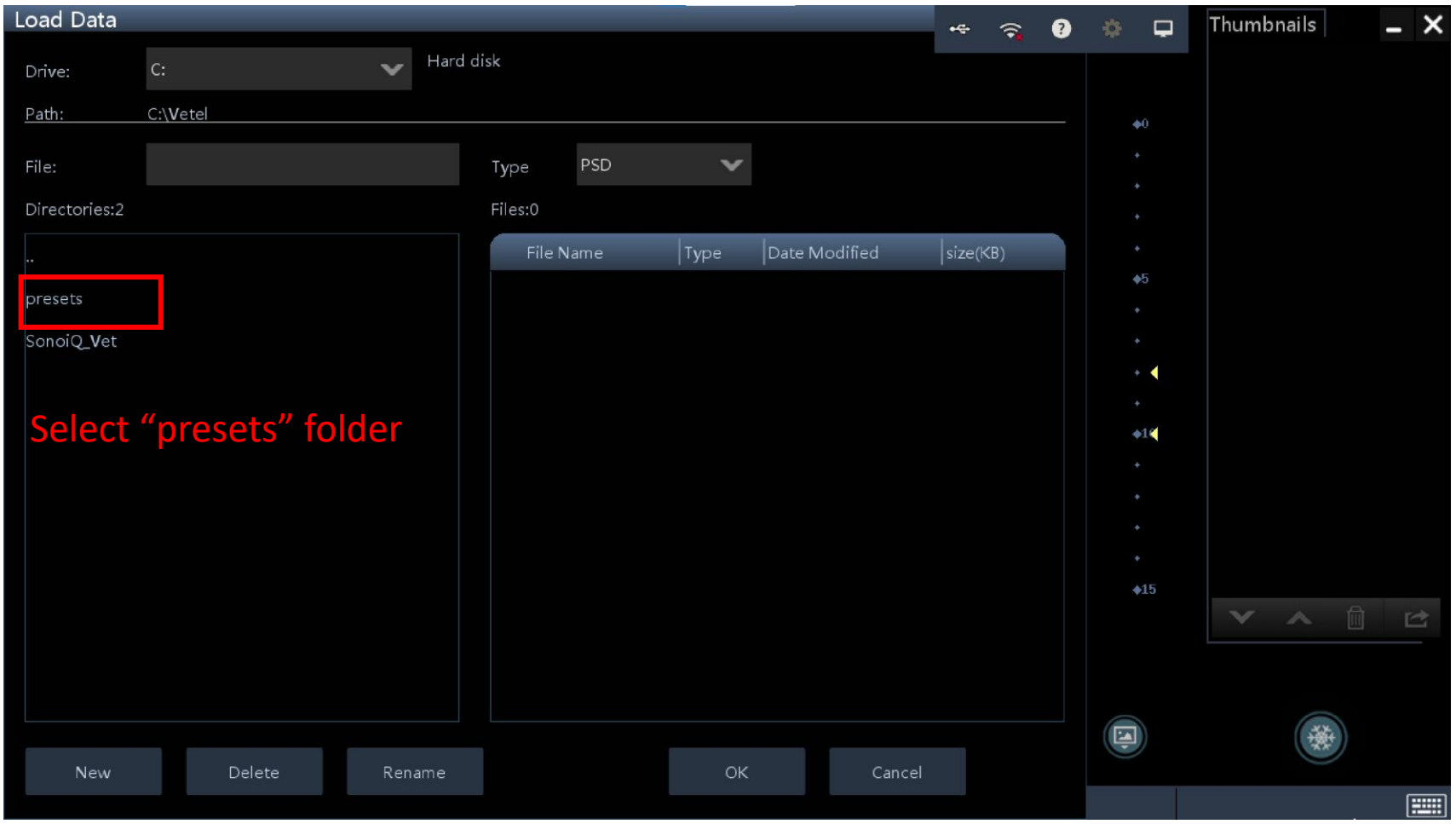


Click on **Image preset**



And then **Import**





Load Data

Drive: C: Hard disk

Path: C:\Vetel\presets

File: Type: PSD

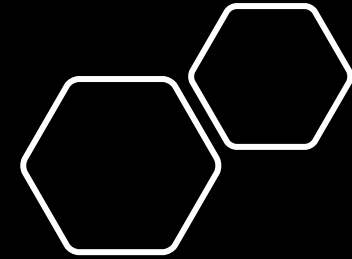
Directories:0 Files:4

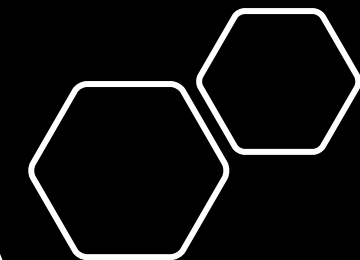
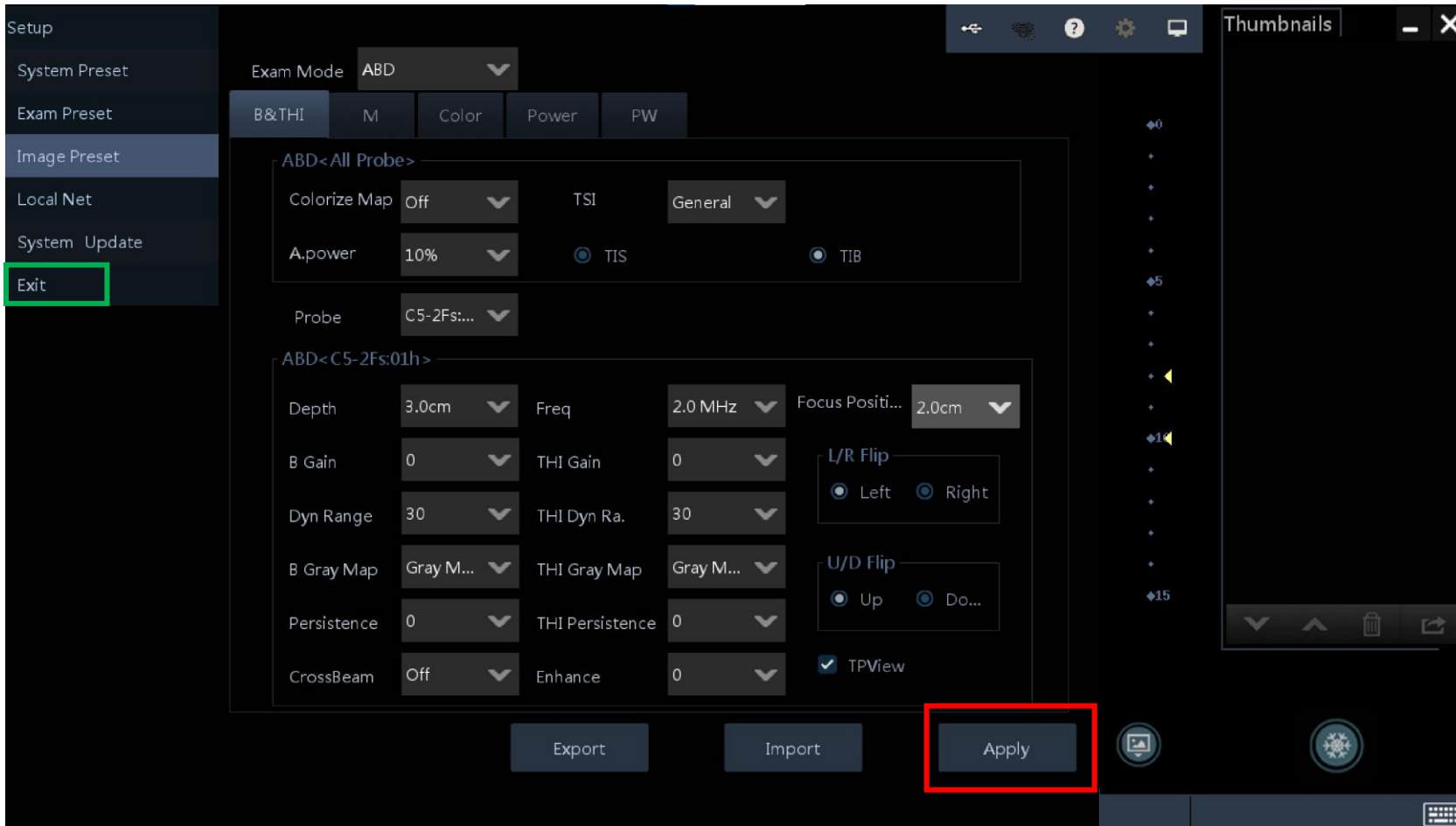
File Name	Type	Date Modified	size(KB)
largeconvex	PSD	2023-08-29 08:15	6162
linear	PSD	2023-08-29 08:22	6162
uconvex	PSD	2023-08-29 08:29	6162
ulinear	PSD	2023-08-29 08:36	6162

Click on the preset you wish to import and then the OK button

New Delete Rename **OK** Cancel

Thumbnails





At the end of the process click on **Apply**( there is no halo around it after being clicked ) and then click on **Exit**